

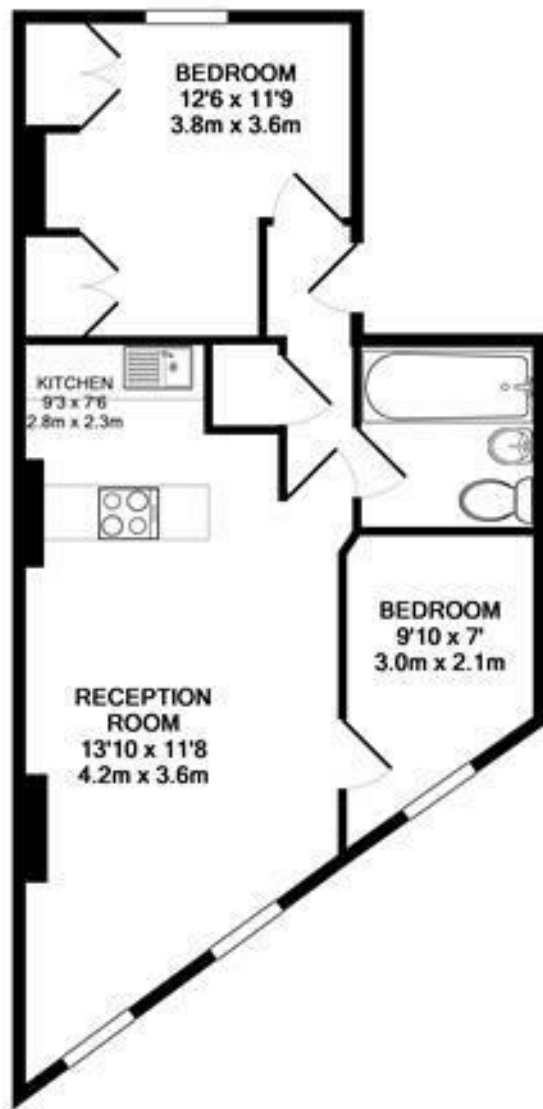
**St Margarets Road  
St Margarets Village  
TW1 2LJ**

Asking Price £449,950

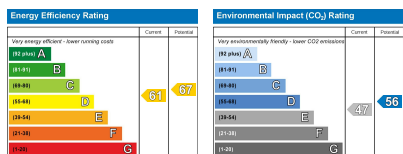
**ChaseBuchanan**







TOTAL APPROX. FLOOR AREA 530 SQ.FT. (49.3 SQ.M.)  
Made with Metropix ©2018



Care has been taken in the preparation of these particulars, however, their accuracy is not guaranteed and they do not form part of any contract. Measurements stated must be considered maximum.

- Viewings accompanied by Chase Buchanan
- Two bedrooms
- Share of freehold
- Scope to further extend (STP)
- Victorian conversion
- Top floor
- Central village location
- Council tax band C

This two bedroom top floor Victorian apartment is situated only a two minute walk away from the St Margaret's village and station giving direct access into London.

The property's accommodation comprises a large and bright front aspect reception room with open plan kitchen, two bedrooms and a separate bathroom. The residence further boasts scope to potential extend (STP and freeholders consents)

The property further benefits from a share of the freehold and low service charges. An appointment to view is highly recommended via the vendors sole agents Chase Buchanan at the earliest opportunity.

For more information or to book a viewing, please contact:

020 8744 2434

**ChaseBuchanan**

124 St Margarets Road, St Margarets, TW1 2AA